



SEND



Bulletin:



Spring



term

2

2

Each half term, this bulletin will highlight what we are doing to make St Mary's even more inclusive for our children with SEND. It will also signpost you to resources and information that can support you and your family at home.



Bulletin Highlights

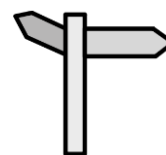
In our '[Frequently Asked Questions](#)' section, we have explained whether school can make a referral for an Autism/ADHD assessment. The key messages are:

- We are currently unable to refer children who are aged 5 years 9 months & over but can request a consultation in exceptional circumstances e.g. a child is not able to access education
- School can refer younger children for a Multi-Disciplinary Assessment; the waiting list is a minimum of 18 months but usually much longer
- You may currently ask the GP for the 'Right to Choose' a private assessment
- Your child does not need a diagnosis to access support

In our '[Resources and Support](#)' section, we share the following:

- New dates for Cygnet Autism Support Programme
- FACE Online Parent Courses
- OT (Occupational Therapy) resources
- National Autistic Society Helpline
- Emotions thermometer & regulation tool

In our '[SEND Spotlight](#)' section, we introduce our ELSA Miss Barnes!



For more useful resources and information, please visit the [SEND Provision](#) page of our website.





  +   
**SEND Training and News**



### **PINS (Partnership for Inclusion of Neurodiversity in Schools) updates:**

- This has now concluded but we have ongoing support meetings with the Neurodiversity Advisors from L-SPA as needed
- OT (Occupational Therapy) & SALT (Speech and Language) Cluster Meetings took place in March where we liaised with therapists & other schools about effective strategies & actions
- St Mary's PINS Commitment/Pledge:

***To create a zoned, low arousal dining space so make lunch times more inclusive for all***

### **'Communication Friendly Classroom Training'**

Mrs Tongue attended some excellent training through the PINS project from Speech and Language Therapists on developing our classrooms to be even more inclusive and supportive of communication needs. This training was disseminated to TAs who have a pivotal role in communicating with our children and using specialist strategies to support pupil's understanding.

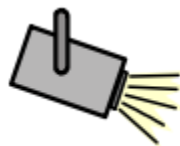


### **'SEND Governor Learning Walk'**

Charlotte Amison, our SEND governor, completed a SEND learning walk in March alongside Mrs Tongue & Miss O'Brien focusing on interventions across the school.

### **'Parental Engagement & Coproduction Training'**

Miss Seaward & Mrs Tongue attended this Educational Psychologist-led training to help us develop the way we work together with parents to support children's progress.



# SEND Spotlight



**Miss Sophie Barnes**

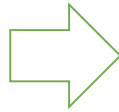
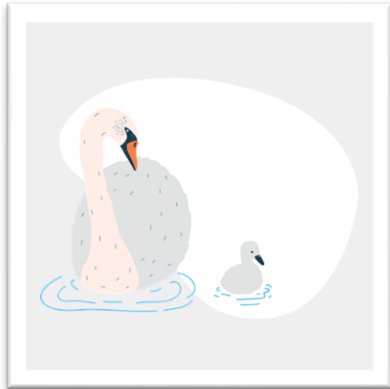
- I have always loved helping and caring for children, ever since I was 15 and my nephew who has autism and ADHD, came to live with us from a very young age. He taught me a lot and still does today!
- I began volunteering at my little brother's school in 2008 when I was 18 and loved it so much I became a TA a year later.
- In 2013 I qualified as an **ELSA (Emotional Literacy Support Assistant)** and in 2018 I qualified as an HLTA (Higher Level Teaching Assistant).
- I joined St Mary's in 2018 and I have had many different roles both in and out of the classroom. All have been challenging and fun!
- Over the last 2 and a half years, I have specialised in supporting children across the school with their learning through an intervention called **Precision Teaching**.
- I run a lunch time club called **Woodland Buddies** which offers a small nurturing environment for children who find playtime overwhelming.
- From Monday – Wednesday afternoons, I support children's emotional wellbeing in my ELSA role.

We have a new **Freemantles Outreach Teacher** for our school called Stacey Reynolds. Stacey visited for the first time this week and she has been a great support already!





## Resources and Support



New programme dates for Cygnet Autism Support programme in Surrey can be found here:

<https://www.trybooking.com/uk/events/landing/79736?>

## OT

FACE Parent Courses Book here:

<https://www.facefamilyadvice.co.uk/supportforparents>



FACE Easter Timetable	
all sessions delivered live online via zoom £24 each 90 minutes long book online at <a href="http://facefamilyadvice.co.uk">facefamilyadvice.co.uk</a>	
Facing Defiance	7 April 7pm
Anxiety Based School Avoidance	8 April 10am
Understanding Anger	8 April 7PM
Anxiety Explained	14 APR 10am
Cannabis & Ketamine Awareness	14 APR 7pm
What is ACT	15 April 10am
Introduction to OCD	15 April 7pm
Supporting Healthy Sleep	22 April 10am
Understanding the Teenage Brain	22 April 7pm
<b>FREE</b> Responding to Angry Behaviour	24 April 7pm
Improving Family Communication	28 April 10am
Autism Improving Communication	28 April 7pm
Understanding Addictive Behaviour	29 April 10am
Supporting a Child with ADHD	29 April 7pm
Anxiety Based School Avoidance	6 May 7pm

Occupational Therapy aims to improve your ability to do everyday functional tasks (at home & school) if you're having difficulties e.g. toileting, eating, drinking, self-help skills, fine motor...

Apps that can help:

<https://surreychildandfamily.co.uk/apps/>

Free video workshops on functional skills & sensory needs:

<https://surreychildandfamily.co.uk/video-workshops/>

Very handy advice sheets:

<https://surreychildandfamily.co.uk/advice-sheet/>

OT helpline open Tuesdays & Thursdays 2-4pm  
01932 558570



Resources and Support



National  
Autistic  
Society



EVENING  
SUPPORT

5-11pm, 7 days  
a week, 365  
days a year.

**Call: 0300 222 5755 (Option 3)**

Our out of hours advice line provides support to parents and carers in Surrey.

Staffed by Tony and Aniq, who are part of our skilled and friendly Family Support Team.

#### Out of hours support line

We provide advice and support to parents and carers in Surrey, who are struggling with behaviours or difficulties which could be related to neurodevelopmental need, such as Autism or ADHD.

Our skilled and friendly staff will talk parents and carers through ways of calming down a difficult situation and remind them of their coping strategies.

#### Support and Signposting

Our out of hours team are there to listen and can provide you with support immediately, as well as signpost you to other services which may be beneficial to you and your family.

Calls are confidential (Unless there is a safeguarding concern, which we will discuss with you).

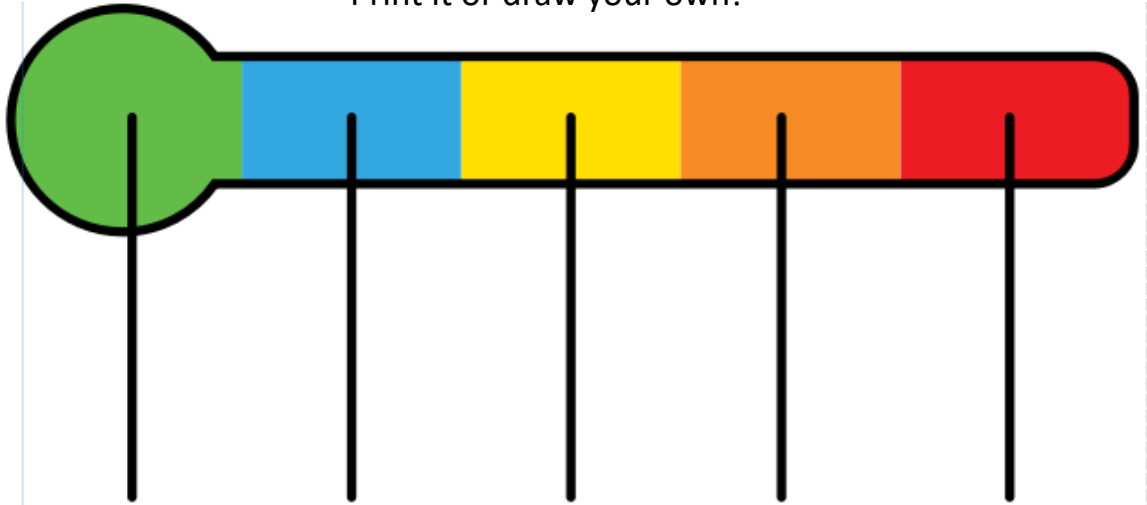
There is no limit to how often you can call this service.



## Does your child struggle to regulate their emotions?

Make an emotions plan with your child this weekend ready for the holidays. In the box, choose together a strategy they will do if they are in the red zone (angry), amber – nearly in the red zone (i.e. very sad), yellow zone (worried/over-excited), blue zone (tired/poorly) or green zone (happy).

Print it or draw your own!



1

2

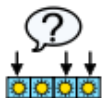
3

4

5



--	--	--	--	--



## Frequently Asked Questions

**I think my child has Autism/ADHD. Can school refer them for an assessment?**



The school can refer a child (*before they turn 5 years & 9 months*) for a Multi-Disciplinary Assessment through Children Family Health Surrey if a child struggles significantly with the school day. If they only have difficulties at home we are unable to refer.

Please note: The referral process is a minimum of 18 months but it can often take much longer than this.

After a child turns 5 years & 9 months, the referral pathway is via Mindworks and it is currently closed. This is to clear the backlog and 4 year waiting list for assessments.

The school is able to request a formal consultation with Mindworks in exceptional circumstances which are listed here:

<https://www.mindworks-surrey.org/talking-points/update-neurodevelopmental-support-children-and-young-people>

They are a little woolly, which can be confusing, but having spoken to the consultation line, it is for children with extreme behaviours, usually at risk of exclusion or struggling to access education probably due to SEND needs.

In other circumstances, it is currently possible for parents to request an assessment for Autism/ADHD through the GP by requesting the 'Right To Choose'. This is the right to choose a private assessment funded by the NHS because the pathway is currently closed. However, this service has also become inundated recently and it is likely that there may be changes made to legislation regarding accessing this in the near future.

Surrey is moving away from a Medical Model of Disability to a Social Model of Disability, offering services & support without a diagnosis. St Mary's always strive to adapt our environment to be more inclusive & support children in the way they need, regardless of a diagnosis.

Support strategies & interventions recommended by Mindworks for children with traits of Autism/ADHD can be found here: <https://www.mindworks-surrey.org/advice-information-and-resources/neurodevelopmental-needs>